



630Wh Max

1. In frame, invisible, suitable for more bike frames;
2. Patented smart locking system, easy and safe to remove;
3. Slipways for custom cover fitting, battery cover and bike frame can be with the same color;
4. Multiple charging ports;
5. Charge Current: 6A;
6. Power: max 36V 17.5Ah, 630Wh, support 20A continuous discharge;
7. Smart BMS with data-log function.



Remove from Side



Remove from Bottom



Remove from Top

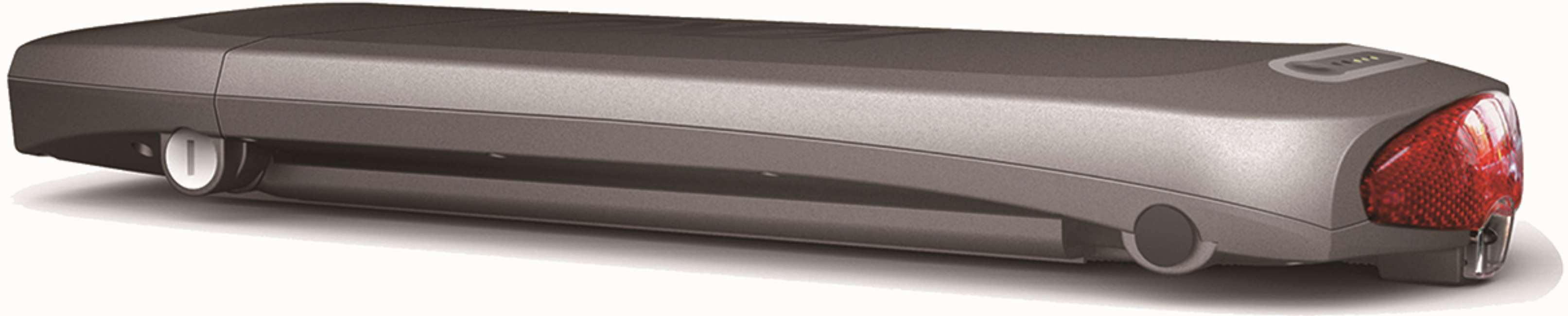


36V 17.5Ah 630Wh

- Slim shape with up to 630W power.
- BMS with short-circuit protection function.
- Big rubber Power Button, designed for heavy use.
- IPX7 Waterproof, best solution for share eBike, eScooter, etc.
- Optimized internal structure, battery pack assembled by full automatic machine, high quality, low cost, short lead time.
- Reliable internal mechanical design, all battery cells and BMS are connected with special holder, good for connection, vibration, mass production.

YOKU Astar

ISO13849 Certified



Comply with EN 15194:2017, 4.3.22, 504Wh max

- Slim design with up to 40 PCS of 18650 cells, which enable up to 490W power.
- Highly reliable 10-Pin connector, for 50A continuously output, for communication between battery and controller, for output to rear right; Reliable car fuse, small impedance.
- Waterproof mechanical design, IP56; Controller box for standard controller; Strong and elegant rear carrier; Plastic case is easy to paint with your desired color.
- Integrated with rear light and reflector which is made in Germany, with European certificates.
- Intelligent battery management system with data log function, easy to access data, such as, cycle life count, charging history, manufacturing information, easy diagnosis.
- Reliable internal mechanical design, all battery cells and BMS are connected with special holder, good for connection, vibration, mass production.
- Battery pack meets with UN38.3 standard, battery cells certificated with UL, IEC62133.

Battery Model	YK3609ZELR2	YK3609ZELR1	YK3610ZELR1	YK3612ZELR1	YK3613ZELR1	YK3613ZELR2	YK4809ZELR1	YK4810ZELR1	YK4810ZELR2
Spec	36V 8.8Ah	36V 8.8Ah	36V 10.4Ah	36V 11.6Ah	36V 13.6Ah	36V 13.6Ah	48V 8.7Ah	48V 10.2Ah	48V 10.2Ah
Max Discharge Current	20A	18A	15A	15A	15A	30A	30A	14A	30A
Cell	2.2Ah	2.2Ah	2.6Ah	2.9Ah	3.4Ah	3.4Ah	2.9Ah	3.4Ah	3.4Ah
Configuration	4P10S						3P13S		
BMS	Smart/Standard								
Communication	RS232, I ² C, SMBus								
Case	plastic, more color options								
External Dimension	150×430×30/56(mm)								
Weight	Approx 2.4kg	Approx 2.4kg	Approx 2.5kg	Approx 2.5kg	Approx 2.5kg	Approx 2.5kg	Approx 2.4kg	Approx 2.4kg	Approx 2.4kg
Others	integrated rear light, reflector								

ZHANGZHOU AUCOPO ENERGY TECHNOLOGY CO., LTD.

Tel.: 86-596-7666111

Mob.: 86-137-0937-3889

Web: www.aucopo.com

Fax: 86-596-7666222

Email: Sales@aucopo.com

Add: Hi-tech Industry Zone, Nanjing County, Zhangzhou, Fujian, China. 363601



Comply with EN 15194:2017, 4.3.22, 504Wh max

- Slim design with up to 40 PCS of 18650 cells, which enable up to 490W power.
- Highly reliable 10-Pin connector, for 50A continuously output, for communication between battery and controller, for output to rear right; Reliable car fuse, small impedance.
- Waterproof mechanical design, IP56; Controller box for standard controller; Strong and elegant rear carrier; Plastic case is easy to paint with your desired color.
- Integrated with rear light and reflector which is made in Germany, with European certificates.
- Intelligent battery management system with data log function, easy to access data, such as, cycle life count, charging history, manufacturing information, easy diagnosis.
- Controller box for standard controller.
- Reliable internal mechanical design, all battery cells and BMS are connected with special holder, good for connection, vibration, mass production.
- Battery pack meets with UN38.3 standard, battery cells certificated with UL, IEC62133.

Battery Model	YK3609ZEUR2	YK3609ZEUR1	YK3610ZEUR1	YK3612ZEUR1	YK3613ZEUR1	YK3613ZEUR2	YK4810ZEUR1	YK4809ZEUR1	YK4810ZEUR2
Spec	36V 8.8Ah	36V 8.8Ah	36V 10.4Ah	36V 11.6Ah	36V 13.6Ah	36V 13.6Ah	48V 10.2Ah	48V 8.7Ah	48V 10.2Ah
Max Discharge Current	20A	15A	18A	15A	15A	30A	14A	30A	30A
Cell	2.2Ah	2.2Ah	2.6Ah	2.9Ah	3.4Ah	3.4Ah	3.4Ah	2.9Ah	3.4Ah
Configuration	4P10S						3P13S		
BMS	Smart/Standard								
Communication	RS232, I ² C, SMBus								
Case	plastic, more color options								
External Dimension	150×443×54(mm)								
Weight	Approx 2.5kg	Approx 2.5kg	Approx 2.6kg	Approx 2.6kg	Approx 2.6kg	Approx 2.6kg	Approx 2.5kg	Approx 2.5kg	Approx 2.5kg
Others	integrated rear light, reflector								

YOKU **Aston**

ISO13849 Certified



Comply with EN 15194:2017, 4.3.22, 672Wh Max

- Slim design with up to 52 PCS of 18650 cells, which enable up to 653W power.
- Highly reliable 10-Pin connector, for 50A continuously output, for communication between battery and controller, for output to rear right; Reliable car fuse, small impedance.
- Waterproof mechanical design, IP56; Controller box for standard controller; Strong and elegant rear carrier; Plastic case is easy to paint with your desired color.
- Integrated with rear light and reflector which is made in Germany, with European certificates.
- Intelligent battery management system with data log function, easy to access data, such as, cycle life count, charging history, manufacturing information, easy diagnosis.
- Reliable internal mechanical design, all battery cells and BMS are connected with special holder, good for connection, vibration, mass production.
- Battery pack meets with UN38.3 standard, battery cells certificated with UL, IEC62133.

Battery Model	YK3611ZEOR2	YK3611ZEOR1	YK3613ZEOR1	YK3614ZEOR1	YK3617ZEOR1	YK3617ZEOR2	YK4809ZEOR1	YK4812ZEOR1	YK4814ZEOR1	YK4814ZEOR2
Spec	36V 11Ah	36V 11Ah	36V 13Ah	36V 14.5Ah	36V 17Ah	36V 17Ah	48V 9Ah	48V 11.6Ah	48V 13.6Ah	48V 13.6Ah
Max discharge current	35A	22A	25A	25A	24A	30A	35A	22A	15A	30A
Cell	2.2Ah	2.2Ah	2.6Ah	2.9Ah	3.4Ah	3.4Ah	2.2Ah	2.9Ah	3.4Ah	3.4Ah
Configuration	5P10S						4P13S			
BMS	Smart/Standard									
Communication	RS232, I ² C, SMBus									
Case	plastic, more color options									
External Dimension	150×430×53/76(mm)									
Weight	Approx 3.0kg	Approx 3.0kg	Approx 3.1kg	Approx 3.1kg	Approx 3.1kg	Approx 3.1kg	Approx 3.2kg	Approx 3.2kg	Approx 3.2kg	Approx 3.2kg
Others	integrated rear light, reflector									

ZHANGZHOU AUCOPO ENERGY TECHNOLOGY CO., LTD.

Tel.: 86-596-7666111

Mob.: 86-137-0937-3889

Web: www.aucopo.com

Fax: 86-596-7666222

Email: Sales@aucopo.com

Add: Hi-tech Industry Zone, Nanjing County, Zhangzhou, Fujian, China. 363601

YOKU Epro

ISO13849 Certified



Comply with EN 15194:2017, 4.3.22, 672Wh Max

- Waterproof mechanical design, IP56; Plastic case is easy to paint with your desired color.
- Intelligent battery management system with data log function, easy to access data, such as, cycle life count, charging history, manufacturing information, easy diagnosis.
- Integrated controller, 9 MOSFET, Sine wave.
- Reliable internal mechanical design, all battery cells and BMS is connected with special holder, good for connection, vibration, mass production.
- Reliable car fuses, small impedance; High quality Samsung/Panasonic/LG 18650 cells.
- Battery pack meets with UN38.3 standard, battery cells certified with UL, IEC62133.

Battery Model	YK3611ZDDR1	YK3611ZDDR2	YK3613ZDDR1	YK3614ZDDR1	YK3617ZDDR1	YK3617ZDDR2	YK4809ZDDR1	YK4812ZDDR1	YK4814ZDDR1	YK4814ZDDR2
Spec	36V 11Ah	36V 11Ah	36V 13Ah	36V 14.5Ah	36V 17Ah	36V 17Ah	48V 9Ah	48V 11.6Ah	48V 13.6Ah	48V 13.6Ah
Max discharge current	35A	22A	25A	25A	24A	30A	35A	22A	15A	30A
Cell	2.2Ah	2.2Ah	2.6Ah	2.9Ah	3.4Ah	3.4Ah	2.2Ah	2.9Ah	3.4Ah	3.4Ah
Configuration	5P10S						4P13S			
BMS	Smart/Standard									
Communication	RS232, I ² C, SMBus									
Case	plastic, more color options									
External Dimension	125×361×94(mm)									
Weight	Approx 3.1g	Approx 3.1kg	Approx 3.2kg	Approx 3.2kg	Approx 3.2kg	Approx 3.2kg	Approx 3.3kg	Approx 3.3kg	Approx 3.3kg	Approx 3.3kg
Others	aluminum controller case, with rubber adapter									

ZHANGZHOU AUCOPO ENERGY TECHNOLOGY CO., LTD.

Tel.: 86-596-7666111

Mob.: 86-137-0937-3889

Web: www.aucopo.com

Fax: 86-596-7666222

Email: Sales@aucopo.com

Add: Hi-tech Industry Zone, Nanjing County, Zhangzhou, Fujian, China. 363601

YOKU Mini Epro

ISO13849 Certified



Comply with EN 15194:2017, 4.3.22, 504Wh max

- Waterproof mechanical design, IP56; Plastic case is easy to paint with your desired color; Integrated controller, 9 MOSFET, Sine wave.
- Intelligent battery management system with data log function, easy to access data, such as, cycle life count, charging history, manufacturing information, easy diagnosis.
- Reliable internal mechanical design, all battery cells and BMS is connected with special holder, good for connection, vibration, mass production.
- Reliable car fuses, small impedance; High quality Samsung/Panasonic/LG 18650 cells.
- Battery pack meets with UN38.3 standard, battery cells certified with UL, IEC62133.

Battery Model	YK3609ZDHR2	YK3609ZDHR1	YK3610ZDHR1	YK3612ZDHR1	YK3613ZDHR1	YK3613ZDHR2	YK4809ZDHR1	YK4810ZDHR1	YK4810ZDHR2
Spec	36V 8.8Ah	36V 8.8Ah	36V 10.4Ah	36V 11.6Ah	36V 13.6Ah	36V 13.6Ah	48V 8.7Ah	48V 10.2Ah	48V 10.2Ah
Max Discharge Current	20A	18A	15A	15A	15A	30A	30A	14A	30A
Cell	2.2Ah	2.2Ah	2.6Ah	2.9Ah	3.4Ah	3.4Ah	2.9Ah	3.4Ah	3.4Ah
Configuration	4P10S						3P13S		
BMS	Smart/Standard								
Communication	RS232, I ² C, SMBus								
Case	Plastic, more color options								
External Dimension	361×94×109(mm)								
Weight	Approx 2.7kg	Approx 2.7kg	Approx 2.7kg	Approx 2.7kg	Approx 2.7kg	Approx 2.7kg	Approx 2.7kg	Approx 2.7kg	Approx 2.7kg
Others	Aluminum controller case, with rubber adapter								

ZHANGZHOU AUCOPO ENERGY TECHNOLOGY CO., LTD.

Tel.: 86-596-7666111
Fax: 86-596-7666222

Mob.: 86-137-0937-3889
Email: Sales@aucopo.com

Web: www.aucopo.com
Add: Hi-tech Industry Zone, Nanjing County, Zhangzhou, Fujian, China. 363601